



Department
of Health

Positive and Safe

**Restraint Reduction Network
13th November 2015**

Guy Cross – Policy Lead, Positive and Safe, Department of Health

Why focus on reducing restrictive interventions?

- Human rights
- Injuries to staff
- No one likes restraining service users
- Money

Why focus on reducing restrictive interventions?

‘it is cheaper to provide high quality care first time round and get it right, than it is to cut costs, reduce quality and run the risk of mistakes and having to re-treat and re-admit.’

Joe Rafferty Chief Executive Merseycare

‘It’s what people do when they don’t understand me’ **NSUN service user**

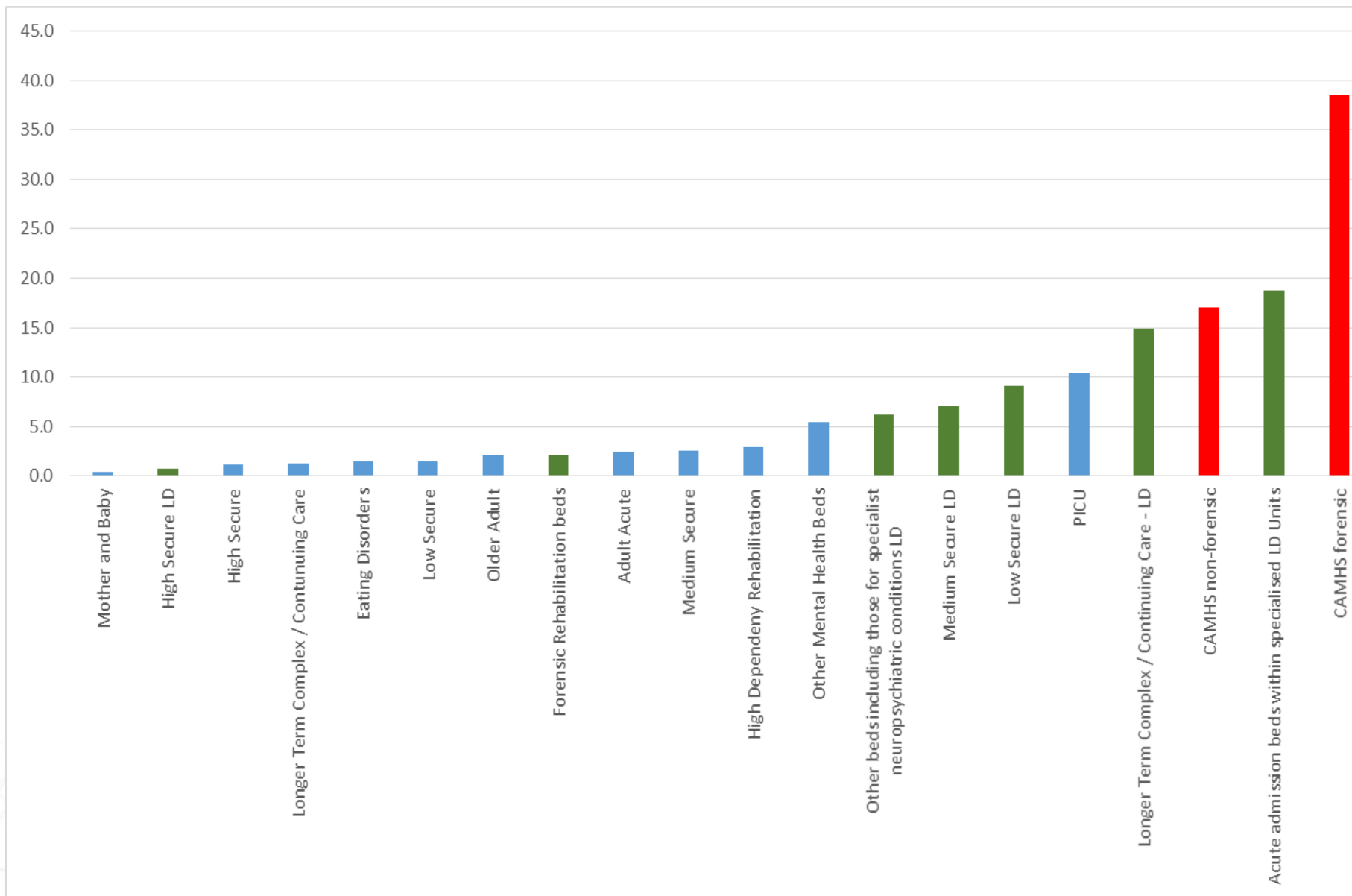
Positive and Proactive Care

Aims

- Cultural change
- Therapeutic environments
- Focus on quality of life
- Governance models
- Reducing reliance on restrictive interventions
- Learning, sharing and promoting practice innovation
- To ensure that restrictive interventions are used in a transparent, legal and ethical manner

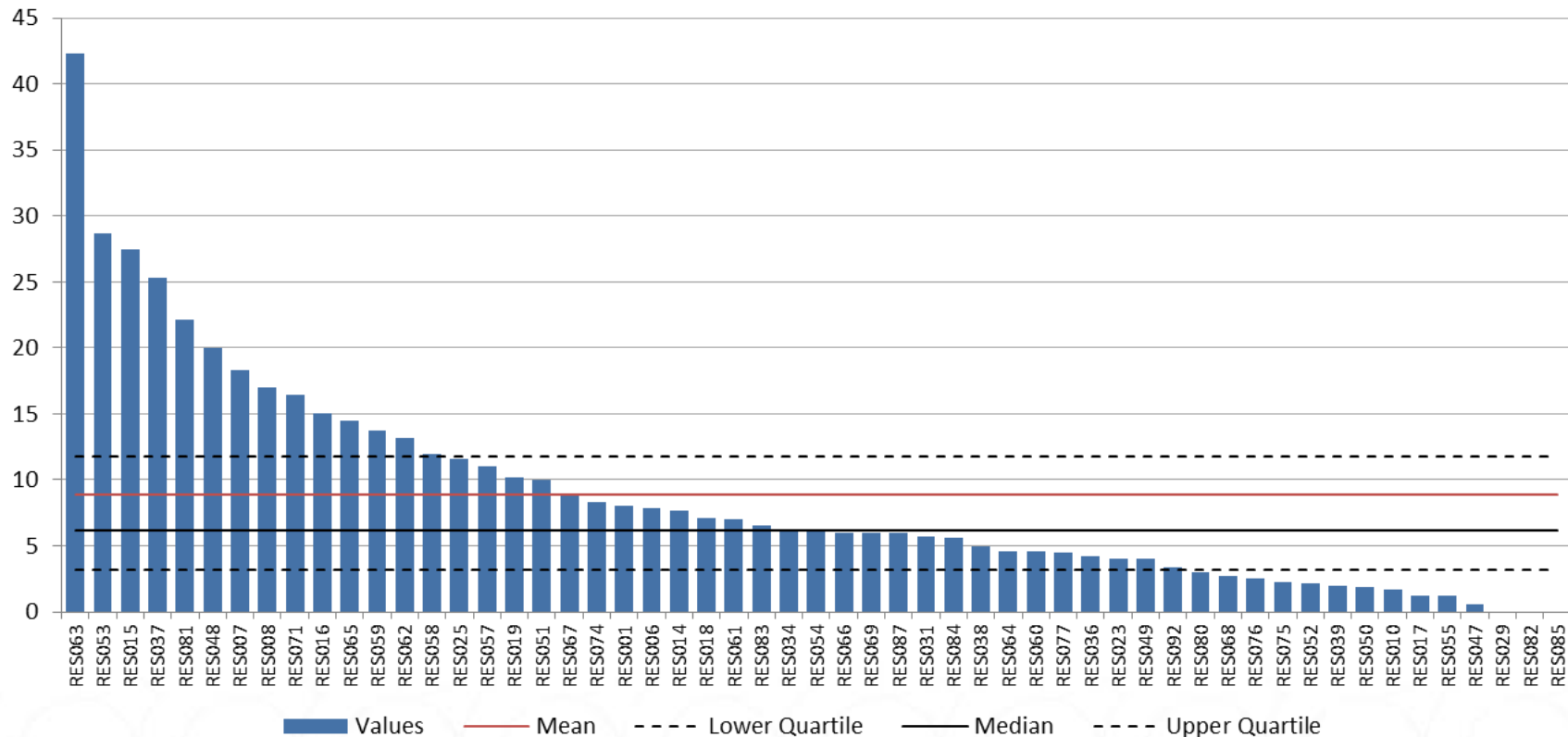
Benchmarking Network Data January 2015

Use of Restraint per 10 beds



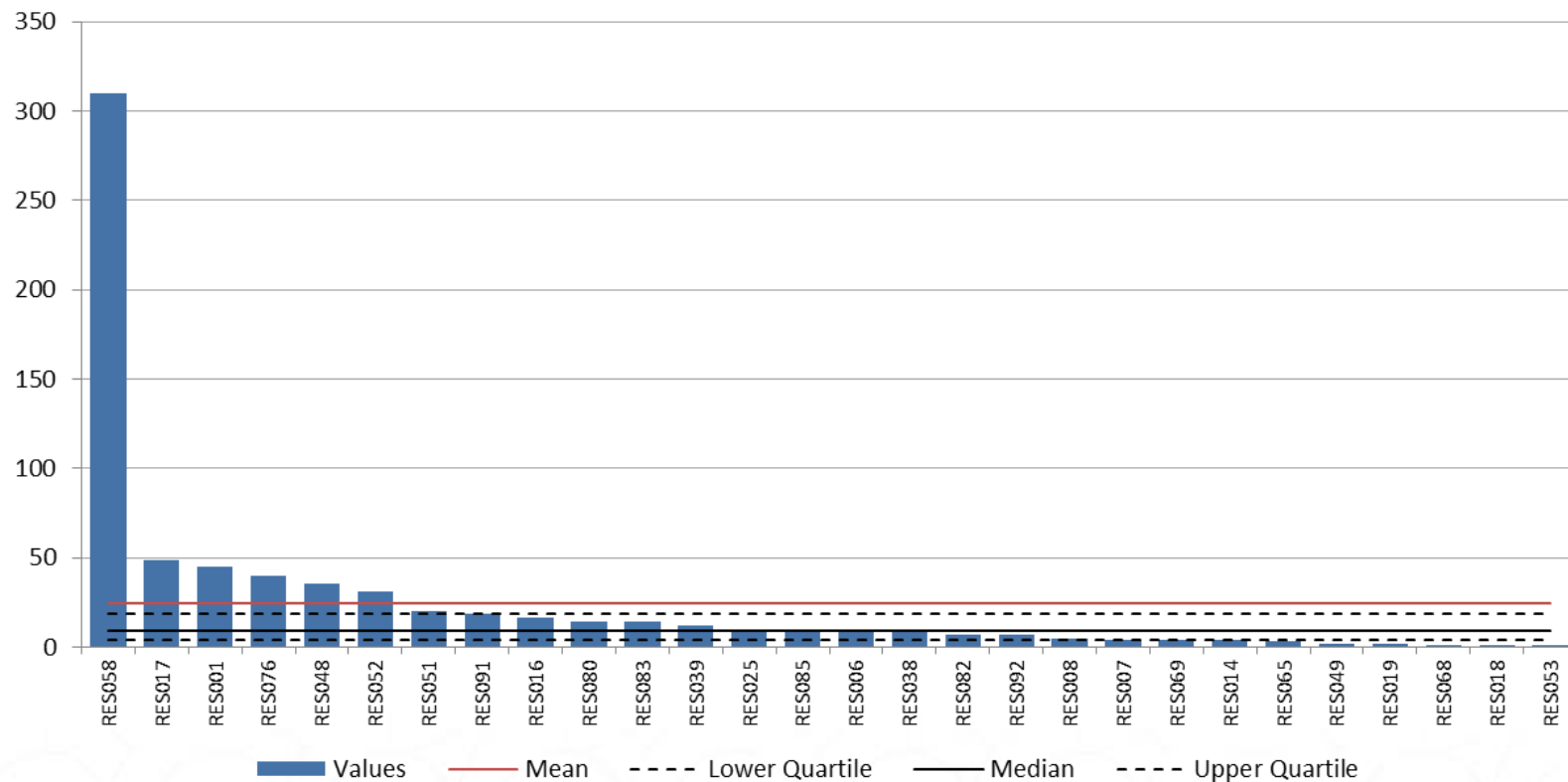
PICU Restraint – August 2015

Total number of incidences of restraint - PICU total - per 10 beds



LD: Acute Admission Beds Restraint

Total number of incidences of restraint - Acute admission beds within specialised learning disability units - per 10 beds



August Overview

1591
uses of
prone
restraint

9600
uses of restraint

instances of
violence to staff

6770

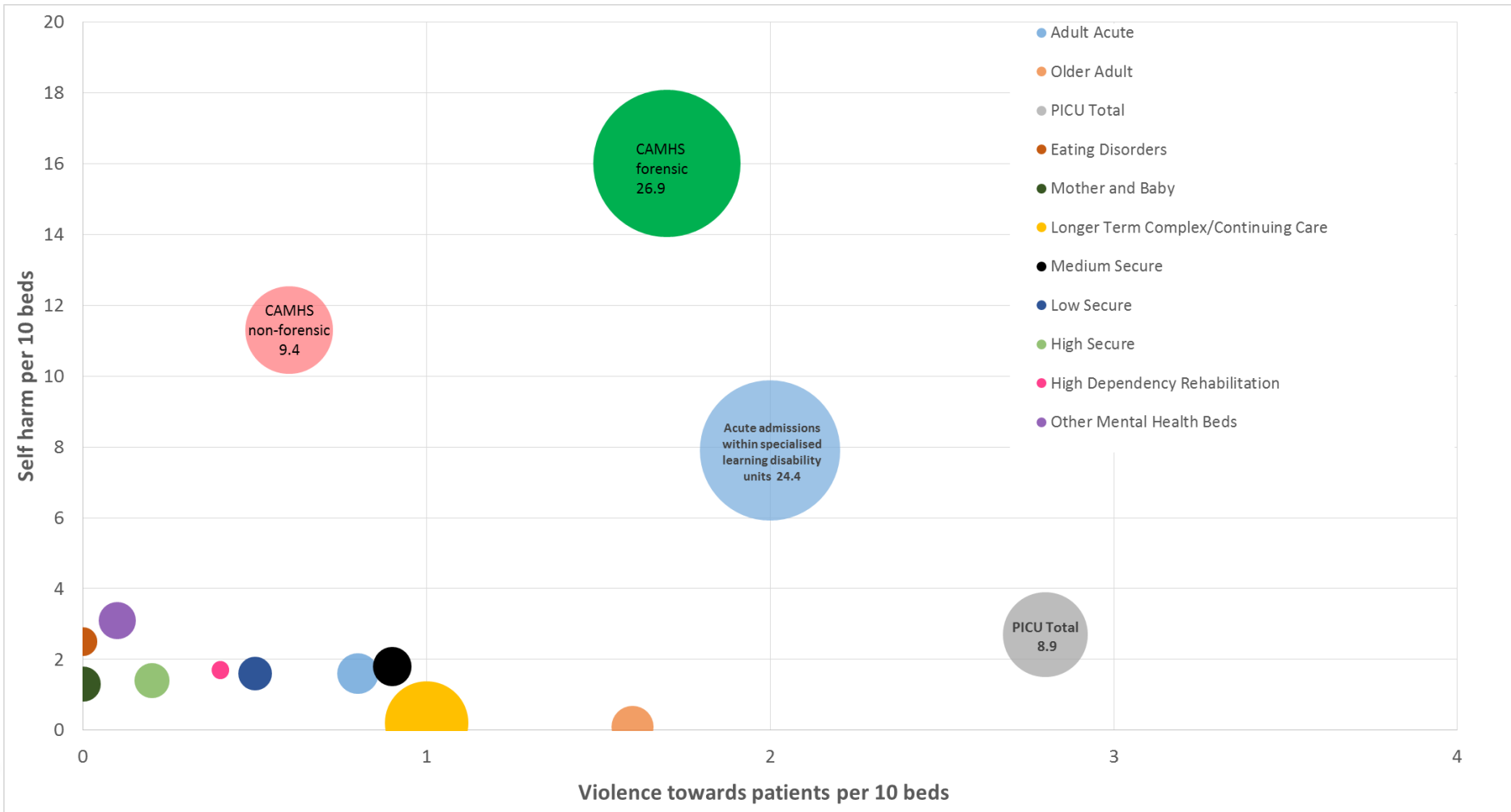
2672
patients
restrained

instances of
self-harm
5801

instances of violence
to patients
2585



Violence and Self Harm



Positive & Safe - Building a Network of Champions

- Moving towards 300 champions
- 2 national and 2 regional champions' events
- 4 regional culture change workshops with FoNS over 300 staff attended
- Monthly newsletters

<http://www.england.nhs.uk/6cs/groups/positive-safe-champions/resources/>

Where next for Positive and Safe?

- Clarification
- Training
- Restrictive Intervention Reduction Plans
- Guidance for children and young peoples services
- Focus on quality
 - When do restrictive interventions happen?
 - What can be learnt from each incident?

Contact Details

Guy Cross

Guy.Cross@dh.gsi.gov.uk